
FlipStart Model E-1001S

System BIOS Setup Quick Start Guide

© 2007 FlipStart Labs. All rights reserved. Reproduction of any part of this content without the prior written permission of FlipStart Labs is strictly prohibited.

Information in this document is subject to change without notice. Screen images simulated. Actual product may differ.

FlipStart, the FlipStart logo, InfoPane, FlipStart Navigator, FlipStart Zoom, and FlipStart Control Center are trademarks of Vulcan Portals Inc. Microsoft, Windows, Vista and Outlook are trademarks of Microsoft Corporation. The Bluetooth® word mark and logos are owned by the Bluetooth SIG, Inc. and any use of such marks by Vulcan Portals Inc. is under license. Other trademarks and trade names in this document refer to the entities claiming the marks and names or their products. FlipStart Labs disclaims any proprietary interest in trademarks and trade names other than its own.

The FlipStart® device, accessories bearing the FlipStart logo and FlipStart proprietary software are protected by copyright, international treaties and patents, including the following U.S. patents: 6,839,231 and 6,977,811. Additional patents are registered or pending in countries around the world.

Contents

Introduction	1
About System BIOS Setup configuration options	2
System BIOS Setup basics	3
Opening the System BIOS Setup main screen	4
Navigating the System BIOS Setup screens	5
Quitting System BIOS Setup	6
Using System BIOS Setup	7
Restoring BIOS factory default settings	8
Changing the system time and date	9
Setting up to boot from external devices	10
Setting up to boot from a USB flash drive or hard disk	10
Setting up to boot from a USB floppy disk drive	12
Setting up to boot from a USB CD or DVD disc drive	13

CHAPTER 1

Introduction

The FlipStart E-1001S uses General Software's Embedded BIOS®-brand Basic Input/Output System (BIOS) pre-boot firmware to control the low-level hardware functions on your FlipStart.

In This Chapter

About System BIOS Setup configuration options 2

About System BIOS Setup configuration options

You can use the System BIOS Setup screens to configure some of these BIOS features to meet your needs. For example, if you need to boot your FlipStart from a bootable external USB drive, you can reconfigure boot options in the System BIOS Setup screens so that, when rebooted, the FlipStart will boot using an external drive rather than the internal hard drive.

The rest of this Guide provides information about some of the most common scenarios when you might need to make a change to the default BIOS settings. In the rest of this Guide, you will find step-by-step instructions for the following scenarios:

- How to enter the BIOS Setup at boot time
- How to restore the factory default BIOS settings
- How to change the BIOS system time and date
- How to boot from a USB flash drive or hard drive
- How to boot from a USB floppy drive
- How to boot from an external optical (DVD/CD) drive

CHAPTER 2

System BIOS Setup basics

By default, the FlipStart system BIOS is set up to provide for the optimal functioning of your FlipStart hardware. However, occasionally you may have a need to make changes to the BIOS settings, such as when you need to boot the FlipStart from an external drive. If for some reason you need to change any default BIOS settings, you use the System BIOS Setup screens to do so.

Caution: Even though many of the default BIOS settings can be changed, we do not recommend changing any of the default settings unless you have a specific need to do so. Changing the default settings could lead to unpredictable or unstable behavior in your FlipStart, or could make the device unusable, so proceed with caution.

In This Chapter

Opening the System BIOS Setup main screen ...	4
Navigating the System BIOS Setup screens	5
Quitting System BIOS Setup.....	6

Opening the System BIOS Setup main screen

You can access the System BIOS Setup screens when the FlipStart first boots up by pressing and holding down the **Delete** key when you see the FlipStart logo splash screen. The system will open the BIOS setup screen as soon as several system self-tests are completed.

Note: You may need to press the Delete key several times.



Navigating the System BIOS Setup screens

Once the System BIOS Setup screen appears, you are presented with a list of configuration options. On any of the screens, press the following keys to navigate and choose different options.

Key	Function
Arrow keys (on FlipStart direction pad)	Moves selection up/down and left/right through available items
Tab	Moves selection to next item
Enter	<ul style="list-style-type: none">▪ On main screen, chooses an item▪ On configuration screens, moves selection bar to next item
Spacebar	Cycles through available options for a selected item
+ or -	Cycles through available options for a selected item
PgUp / PgDown (available by pressing Fn + Up or Down Arrow key on direction pad)	Cycles through available options for a selected item
Esc	<ul style="list-style-type: none">▪ On main screen, exits System BIOS Setup without saving any changes▪ On configuration screens, returns to main screen

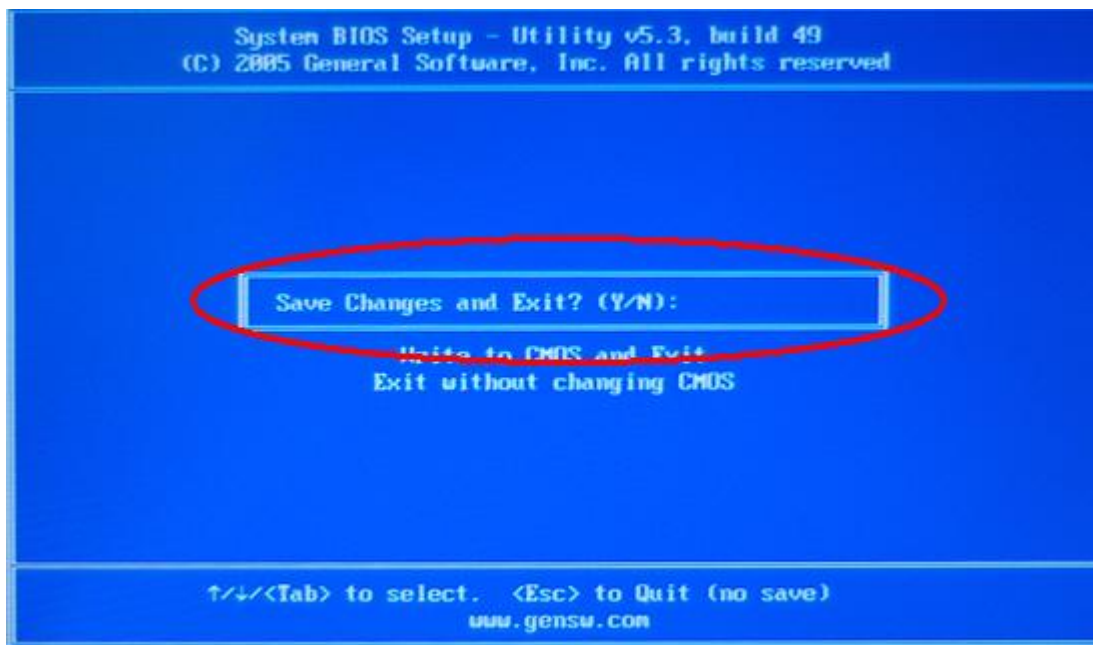
Quitting System BIOS Setup

You can quit System BIOS Setup in two ways:

- To exit without saving any changes, press **Esc**, and then press **Y** when prompted. (To cancel and return to the main screen, press **N** when prompted.)

Note: Alternatively, rather than pressing **Esc**, you can select **Exit without changing CMOS** on the main screen, and then press **Enter**.

- To save changes and exit, select **Write to CMOS and Exit**, press **Enter**, and then press **Y** when prompted. (To cancel and return to the main screen, press **N** when prompted.)



CHAPTER 3

Using System BIOS Setup

Once you have started System BIOS setup, navigate to the item you want to change, make changes to the item (usually using the spacebar to cycle through options), return to the main screen and then choose either to save your changes and exit System BIOS Setup or to discard your changes and exit System BIOS Setup. Once you have exited System BIOS Setup, the system will automatically reboot. If you chose to save changes, those changes will be applied.

The remainder of this chapter provides step-by-step instructions for making changes to the BIOS for typical re-configuration situations.

In This Chapter

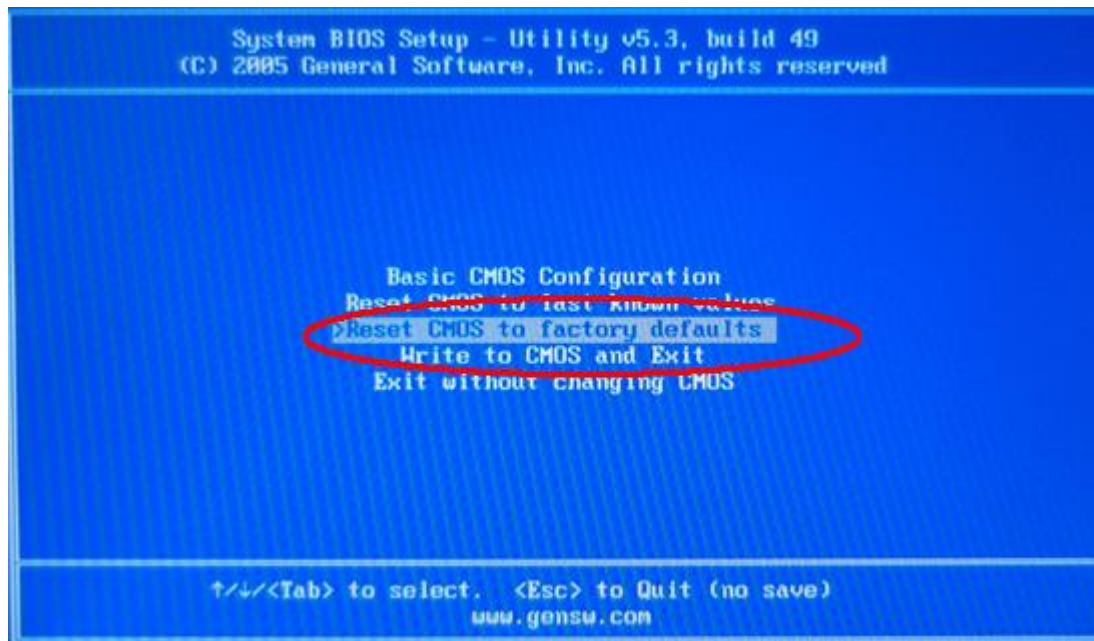
Restoring BIOS factory default settings.....	8
Changing the system time and date	9
Setting up to boot from external devices.....	10

Restoring BIOS factory default settings

If you have made changes to the BIOS settings and need to quickly return to the factory default settings, follow the procedure outlined below.

Note: Resetting the BIOS to the factory default settings only affects settings such as drive assignments. You will not lose any data on the hard drive by restoring factory defaults.

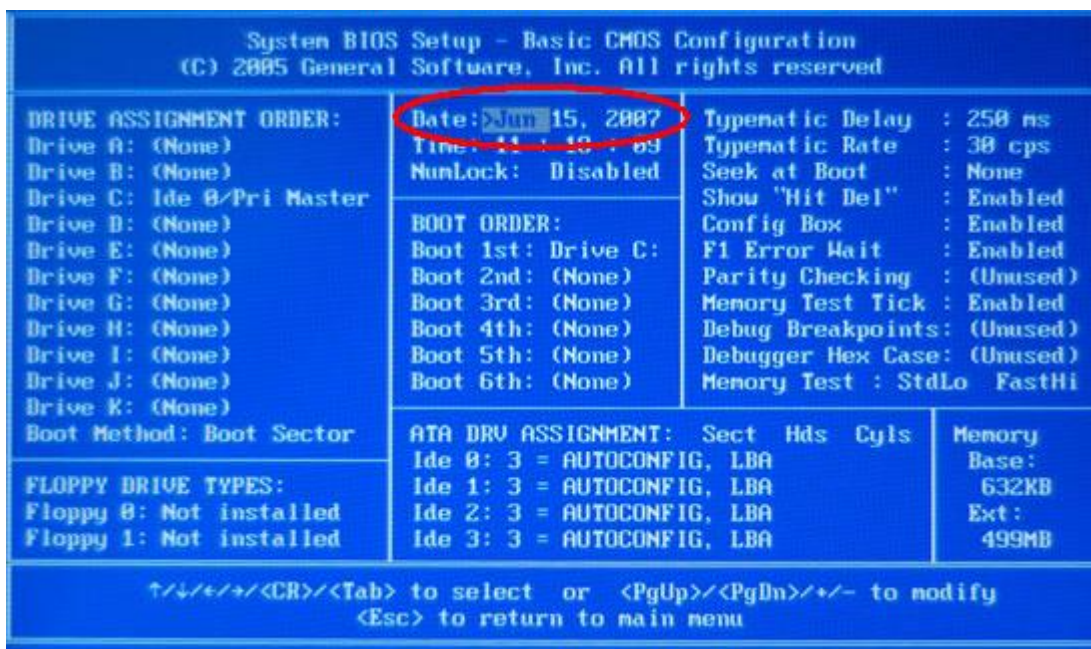
- 1 Turn on the FlipStart, and when you first see the FlipStart logo screen, press **Delete**. The main System BIOS Setup screen appears.
- 2 Use the down arrow key on the direction pad or **Tab** to select **Reset CMOS to factory defaults**, and then press **Enter**.
- 3 When prompted **Reset CMOS to factory defaults? (Y/N)**, press **Y**. The system reboots automatically with factory settings applied.



Changing the system time and date

If your FlipStart's time and date settings are incorrect (for example, after doing a system restore), you can set the correct time and date using the System BIOS Setup. Use the following procedure to do so.

- 1 Turn on the FlipStart, and when you first see the FlipStart logo screen, press **Delete**. The main System BIOS Setup screen appears.
- 2 Use the down arrow key on the direction pad or **Tab** to select **Basic CMOS Configuration**, and then press **Enter**.
- 3 Use the arrow keys to move the selection highlight to the date or time setting you wish to change.
- 4 Press the spacebar to change the currently selected option.



- 5 Press **Esc** to return to the main screen.
- 6 Use the down arrow key on the direction pad or **Tab** to select **Write to CMOS and Exit**, and then press **Enter**.
- 7 When prompted **Save Changes and Exit? (Y/N)**, press **Y**. The system reboots automatically with the new settings applied.

Setting up to boot from external devices

If you need to boot your FlipStart from an external drive, you must first configure the correct BIOS settings for your specific situation. For example, if you need to boot from an external hard drive, you need to make sure that the BIOS settings are configured to boot to the an external USB hard drive rather than from the internal hard drive.

Note: The external drive or disc to which you boot must

- a) be bootable, and
- b) already contain an operating system.

The FlipStart BIOS supports booting from the following external drives:

- Bootable USB flash drives
- USB hard drives
- USB optical (CD or DVD) drives
- USB floppy disk drives

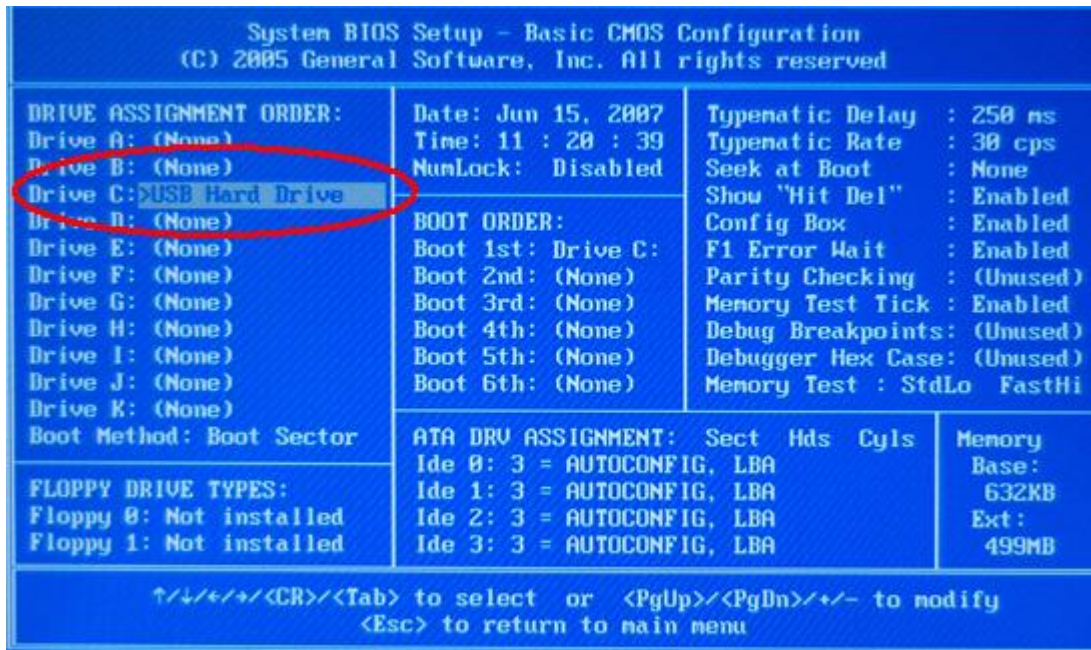
Setting up to boot from a USB flash drive or hard disk

Your FlipStart has the ability to boot from a bootable USB flash drive or USB hard drive. Use the procedure below to configure the BIOS settings to boot from such a device.

Note: Before you begin, ensure that the drive is bootable and contains an operating system, such as MS-DOS or WinPE. Not all USB flash drives are bootable. Please check your drive's user manual or manufacturer's specification to verify that your USB drive is bootable.

- 1 Attach the USB flash or hard drive to a USB port on the FlipStart.
- 2 Turn on the FlipStart, and when you first see the FlipStart logo screen, press **Delete**. The main System BIOS Setup screen appears.
- 3 Use the down arrow key on the direction pad or **Tab** to select **Basic CMOS Configuration**, and then press **Enter**.
- 4 Use the arrow keys to move the selection highlight to **Drive C:** in the **Drive Assignment Order** section in the left column of the screen.
- 5 Press the spacebar until the **Drive C:** option shows **USB Hard Drive**.

- 6 Check that the **Boot 1st** item in the **Boot Order** section is set to **Drive C:**.



- 7 Press **Esc** to return to the main screen.
- 8 Use the down arrow key on the direction pad or **Tab** to select **Write to CMOS and Exit**, and then press **Enter**.
- 9 When prompted **Save Changes and Exit? (Y/N)**, press **Y**.
The system reboots automatically from the external drive.

To return the system to the factory default setting of booting from the internal hard drive, see *Restoring BIOS factory default settings* (on page 8).

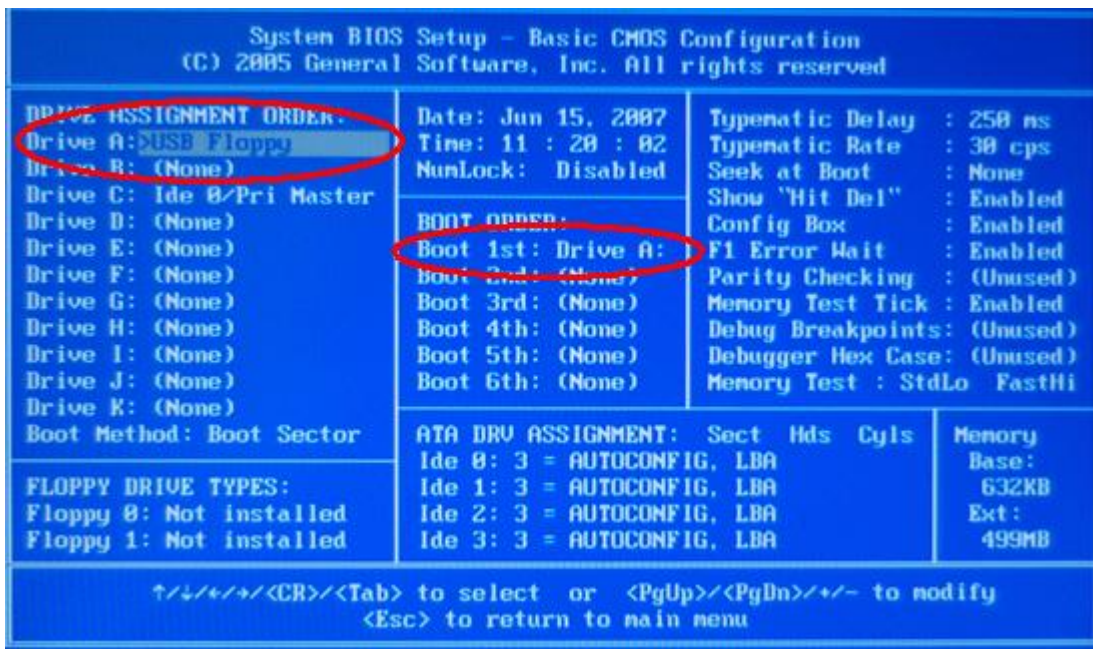
Note: In the **Boot Order** area on the **Basic CMOS Configuration** screen, selecting **Drive D:** for any option has no effect. The system will always boot to Drive C:. If you wish to boot to a C: drive other than the internal hard drive, you must first change the Drive C: assignment in the **Drive Assignment Order** area to the type of drive that you want to boot to (such as an external USB Hard Drive).

Setting up to boot from a USB floppy disk drive

Your FlipStart has the ability to boot from a bootable USB floppy disk drive. Use the procedure below to configure the BIOS settings to boot from such a device.

Note: Before you begin, ensure that the floppy disk is bootable and contains an operating system, such as MS-DOS or WinPE.

- 1 Attach the USB floppy disk drive to a USB port on the FlipStart, and insert the bootable floppy disk into the drive.
- 2 Turn on the FlipStart, and when you first see the FlipStart logo screen, press **Delete**. The main System BIOS Setup screen appears.
- 3 Use the down arrow key on the direction pad or **Tab** to select **Basic CMOS Configuration**, and then press **Enter**.
- 4 Use the arrow keys to move the selection highlight to **Drive A:** in the **Drive Assignment Order** section in the left column of the screen.
- 5 Press the spacebar until the **Drive A:** item shows **USB Floppy**.
- 6 Use the arrow keys to move the selection highlight to the **Boot 1st** item in the **Boot Order** section.
- 7 Press the spacebar until the **Boot 1st** item shows **Drive A:**.



- 8 Press **Esc** to return to the main screen.
- 9 Use the down arrow key on the direction pad or **Tab** to select **Write to CMOS and Exit**, and then press **Enter**.

10 When prompted **Save Changes and Exit? (Y/N)**, press **Y**.

The system reboots automatically from the disk in the external floppy drive.

To return the system to the factory default setting of booting from the internal hard drive, see *Restoring BIOS factory default settings* (on page 8).

Note: You do *not* need to change any settings in the section labeled **Floppy Drive Types**.

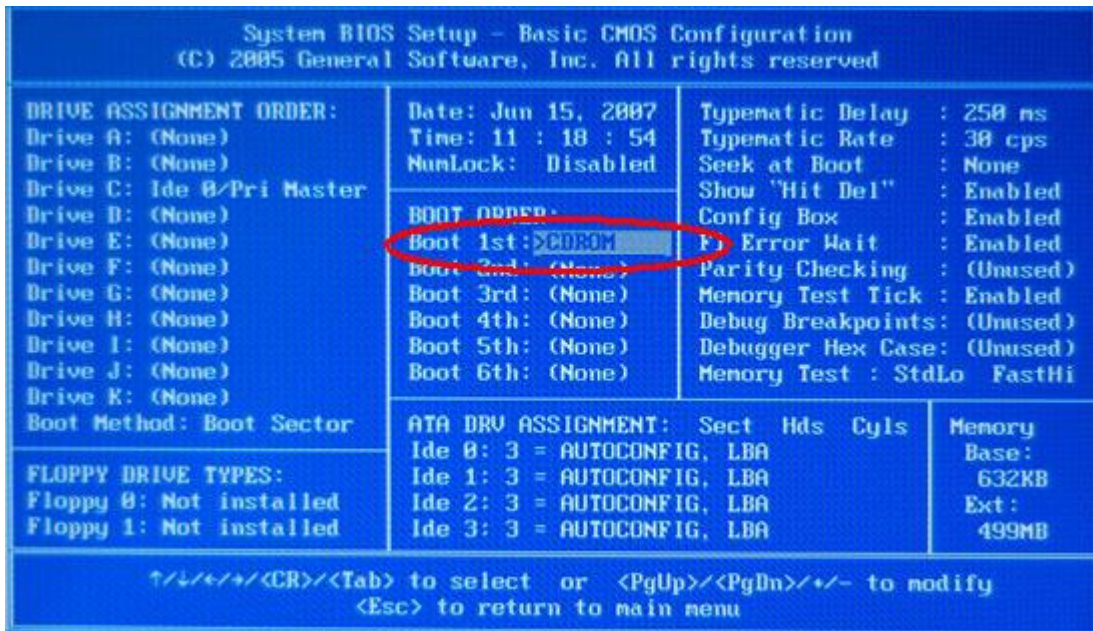
Setting up to boot from a USB CD or DVD disc drive

Your FlipStart has the ability to boot from a bootable USB CD or DVD drive. Use the procedure below to configure the BIOS settings to boot from such a device.

Note: Before you begin, ensure that your CD or DVD is bootable and contains an operating system, such as MS-DOS or WinPE. The DVD recovery disc included with your FlipStart can be booted from an external DVD drive.

- 1** Attach the USB CD or DVD drive to a USB port on the FlipStart.
- 2** Power on the CD or DVD drive, and insert the bootable CD or DVD into the drive.
- 3** Turn on the FlipStart, and when you first see the FlipStart logo screen, press **Delete**. The main System BIOS Setup screen appears.
- 4** Use the down arrow key on the direction pad or **Tab** to select **Basic CMOS Configuration**, and then press **Enter**.
- 5** Use the arrow keys to move the selection highlight to the **Boot 1st** item in the **Boot Order** section.

- 6 Press the spacebar until the **Boot 1st** item shows **CDROM**.



- 7 Press **Esc** to return to the main screen.
- 8 Use the down arrow key on the direction pad or **Tab** to select **Write to CMOS and Exit**, and then press **Enter**.
- 9 When prompted **Save Changes and Exit? (Y/N)**, press **Y**.
The system reboots automatically from the CD or DVD in the external drive.

To return the system to the factory default setting of booting from the internal hard drive, see *Restoring BIOS factory default settings* (on page 8).